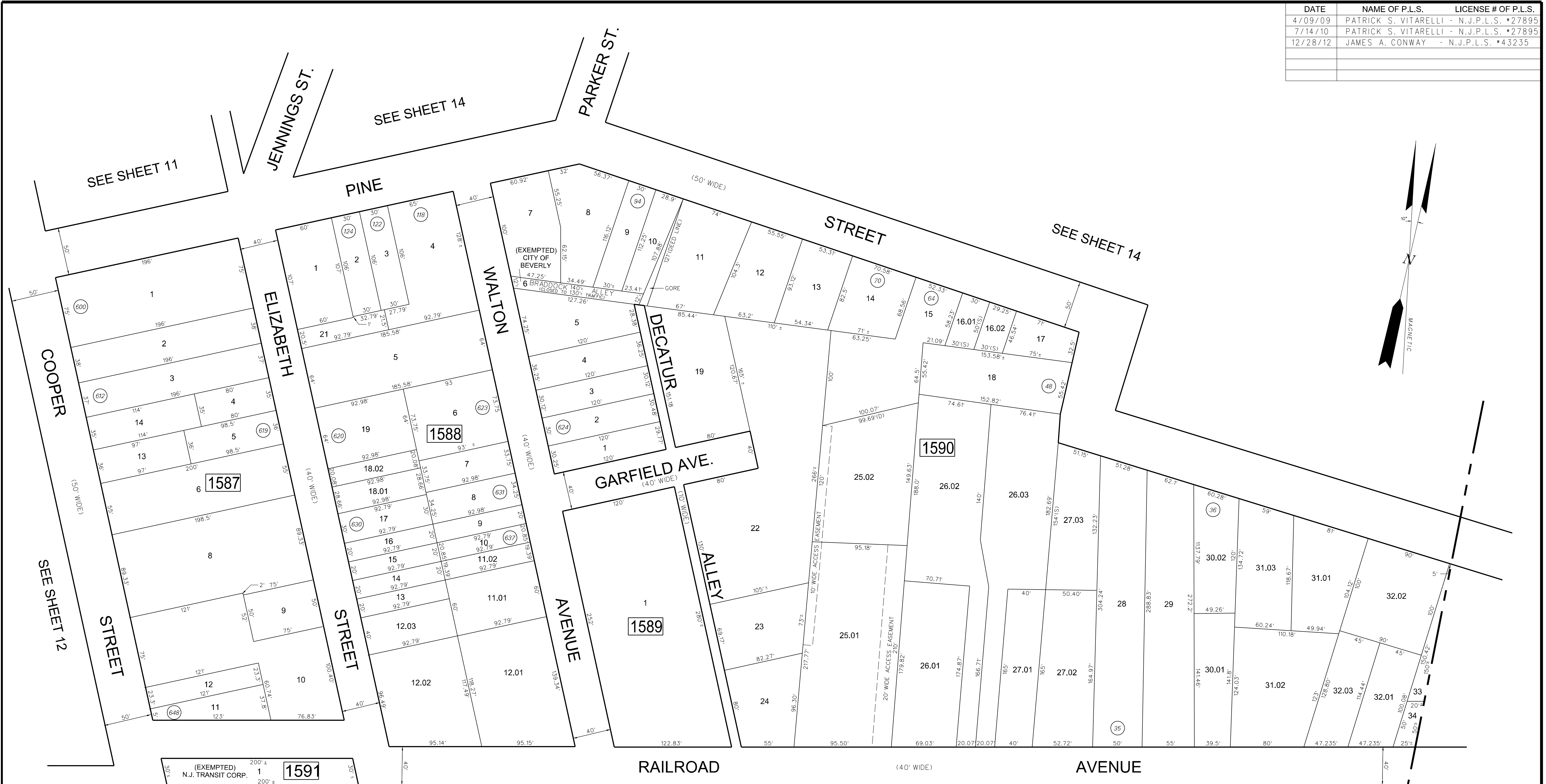


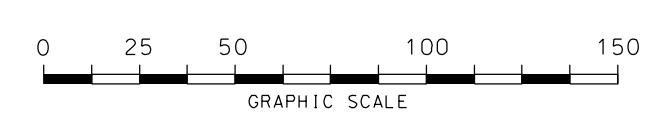
DATE	NAME OF P.L.S.	LICENSE # OF P.L.S.
4/09/09	PATRICK S. VITARELLI -	N.J.P.L.S. #27895
7/14/10	PATRICK S. VITARELLI -	N.J.P.L.S. #27895
12/28/12	JAMES A. CONWAY -	N.J.P.L.S. #43235



PENNSYLVANIA RAILROAD  
 UNITED NEW JERSEY RAILROAD & CANAL CO. CAMDEN TO AMBOY, MAINLINE

EDGEWATER TOWNSHIP

NOTES:  
 1). ALL ACREAGE GIVEN ON THIS MAP DOES NOT INCLUDE ROAD AREAS.  
 2). THIS SHEET IS A DIGITIZED COPY OF THE TAX MAP ORIGINALLY PREPARED BY M. PAUL AUSTIN AND AUGUST 1960 THE ORIGINAL APPROVED MAP IS ON FILE IN THE OFFICE OF THE TOWNSHIP ENGINEER.  
 3). BLOCK AND LOT NUMBERS SHOWN HEREON APPLY TO THIS MAP ONLY, WHICH SUPERSEDES MAP DATED - APRIL 22, 1919



100 - DENOTES HOUSE NUMBER

DIVISION OF TAXATION  
 THIS SHEET WAS FORMALLY APPROVED ON AUG 17, 1980  
 BY C.E. BARNES AND ASSIGNED SERIAL NUMBER 285

**TAX MAP**  
**CITY OF BEVERLY**  
 BURLINGTON COUNTY, NEW JERSEY  
 SCALE: 1"=50' DATE: APRIL, 2009  
 PATRICK S. VITARELLI N.J.L.S. 27895  
 ENVIRONMENTAL RESOLUTIONS, INC.  
 2 FELLOWSHIP ROAD, SUITE 300, MT. LAUREL, NEW JERSEY