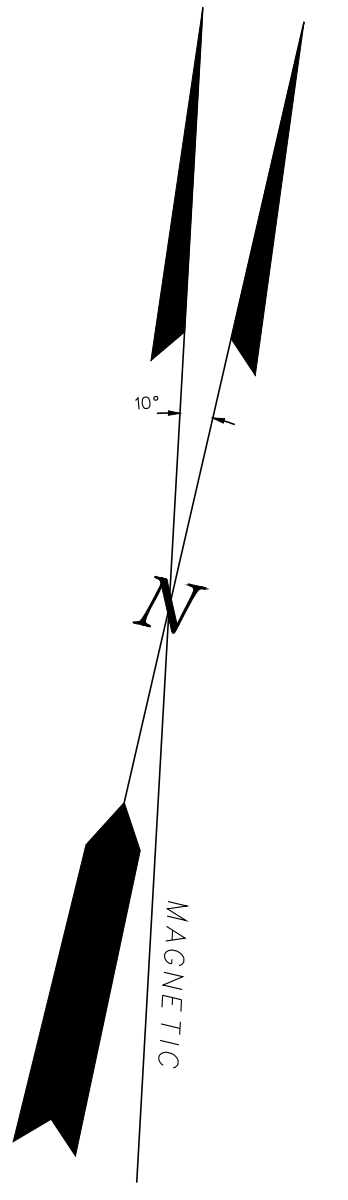
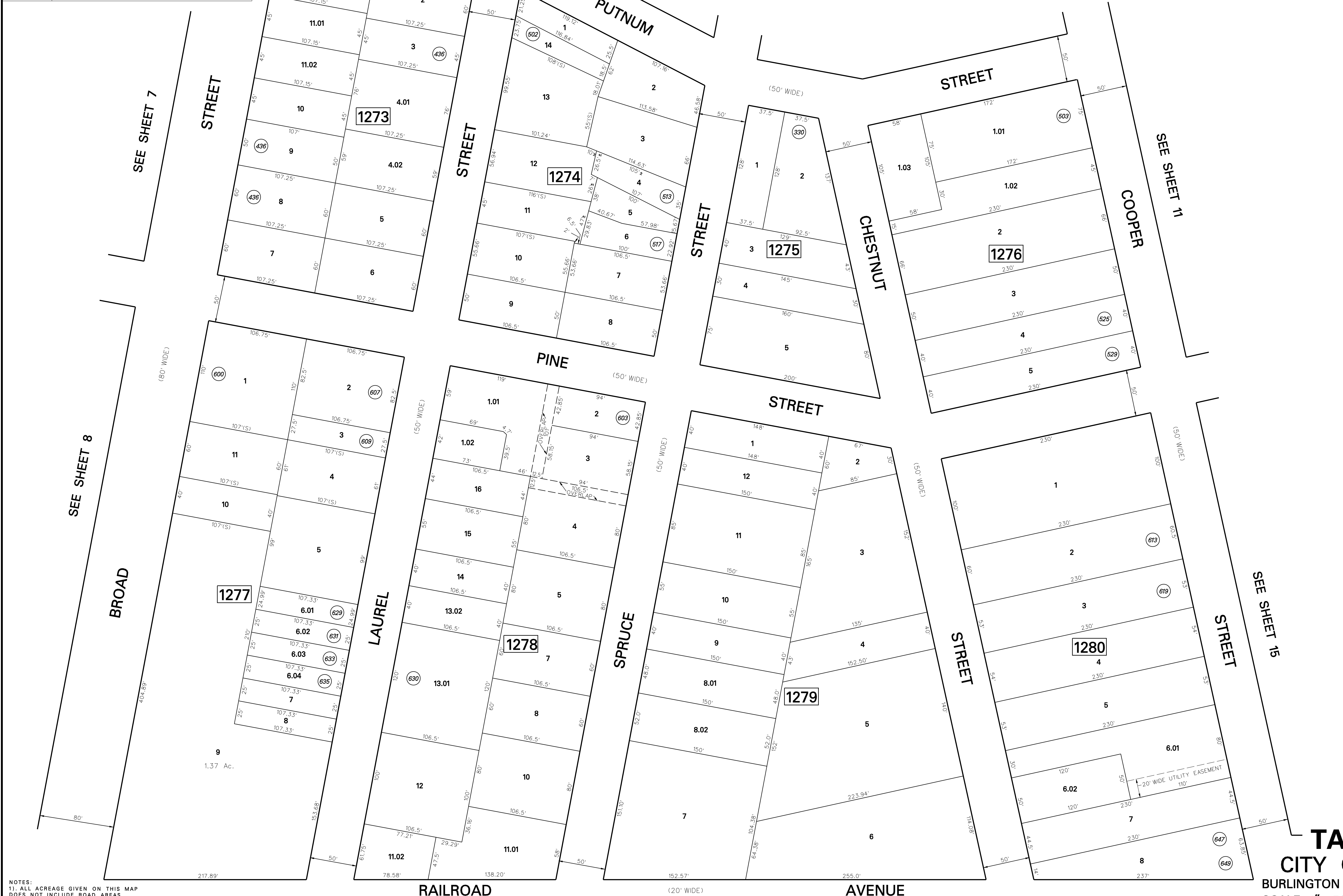


DATE	NAME OF P.L.S.	LICENSE #	OF P.L.S.
4/09/09	PATRICK S. VITARELLI	- N.J.P.L.S. #27895	
3/04/11	PATRICK S. VITARELLI	- N.J.P.L.S. #27895	



DIVISION OF TAXATION
 THIS SHEET WAS FORMALLY APPROVED ON AUG 17, 1980
 BY C.E. BARNES AND ASSIGNED SERIAL NUMBER 286

TAX MAP
CITY OF BEVERLY
 BURLINGTON COUNTY, NEW JERSEY
 SCALE: 1" = 50' DATE: APRIL, 2009
 PATRICK S. VITARELLI N.J.L.S. 27895
 ENVIRONMENTAL RESOLUTIONS, INC.
 525 FELLOWSHIP ROAD, SUITE 300, MT. LAUREL, NEW JERSEY

NOTES:
 1) ALL ACREAGE GIVEN ON THIS MAP DOES NOT INCLUDE ROAD AREAS.
 2) THIS SHEET IS A DIGITIZED COPY OF THE TAX MAP ORIGINALLY PREPARED BY M. PAUL AUSTIN AND AUGUST 1980 THE ORIGINAL APPROVED MAP IS ON FILE IN THE OFFICE OF THE TOWNSHIP ENGINEER.
 3) BLOCK AND LOT NUMBERS SHOWN HEREON APPLY TO THIS MAP ONLY, WHICH SUPERSEDES MAP DATED - APRIL 22, 1919

PENNSYLVANIA RAILROAD
 UNITED NEW JERSEY RAILROAD & CANAL CO. CAMDEN TO AMBOY, MAINLINE
EDGEWATER PARK TOWNSHIP

