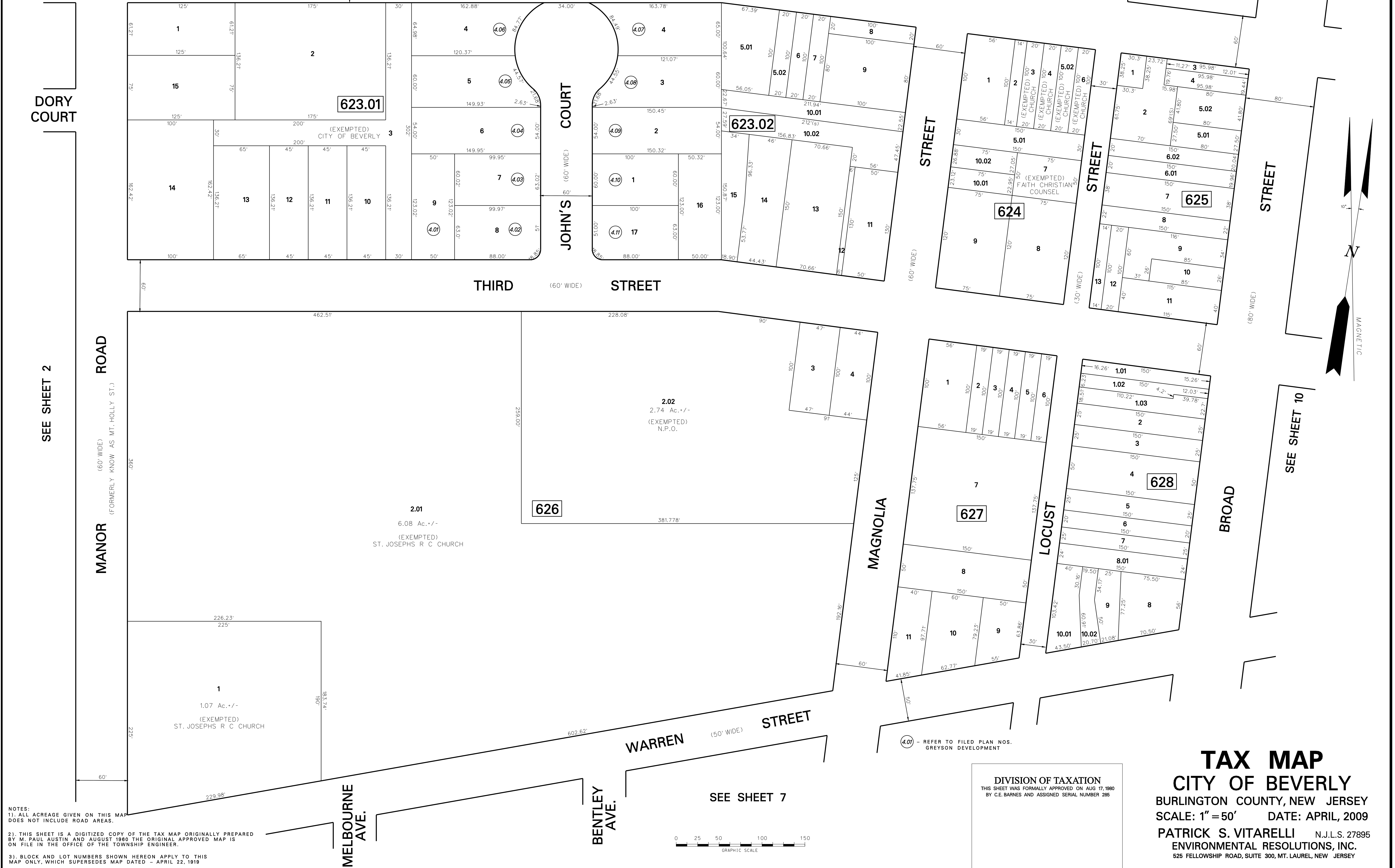


| DATE    | NAME OF P.L.S.                           | LICENSE # | OF P.L.S. |
|---------|--|-----------|-----------|
| 4/09/09 | PATRICK S. VITARELLI - N.J.P.L.S. #27895 |           |           |
| 3/25/10 | PATRICK S. VITARELLI - N.J.P.L.S. #27895 |           |           |

SEE SHEET 5



DORY COURT

SEE SHEET 2

MANOR ROAD (FORMERLY KNOWN AS MT. HOLLY ST.)

SECOND (60' WIDE) STREET

THIRD (60' WIDE) STREET

JOHN'S COURT (60' WIDE)

STREET

MAGNOLIA

LOCUST

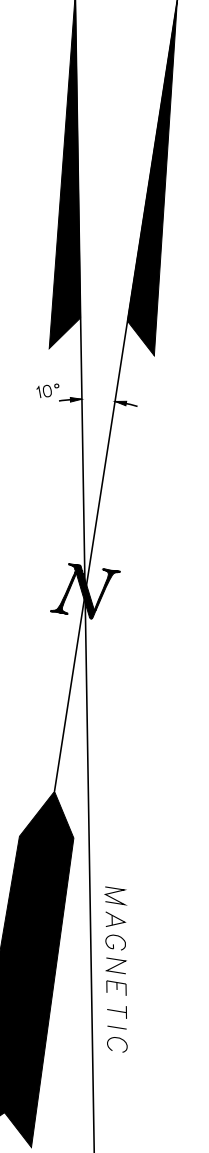
BROAD

WARREN (50' WIDE) STREET

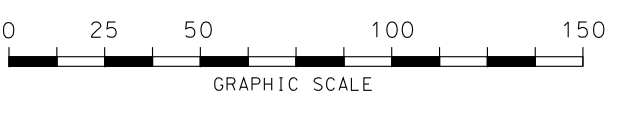
BENTLEY AVE.

MELBOURNE AVE.

SEE SHEET 10



NOTES:  
 1). ALL ACREAGE GIVEN ON THIS MAP DOES NOT INCLUDE ROAD AREAS.  
 2). THIS SHEET IS A DIGITIZED COPY OF THE TAX MAP ORIGINALLY PREPARED BY M. PAUL AUSTIN AND AUGUST 1980 THE ORIGINAL APPROVED MAP IS ON FILE IN THE OFFICE OF THE TOWNSHIP ENGINEER.  
 3). BLOCK AND LOT NUMBERS SHOWN HEREON APPLY TO THIS MAP ONLY, WHICH SUPERSEDES MAP DATED - APRIL 22, 1919



(4.01) - REFER TO FILED PLAN NOS. GREYSON DEVELOPMENT

DIVISION OF TAXATION  
 THIS SHEET WAS FORMALLY APPROVED ON AUG 17, 1980  
 BY C.E. BARNES AND ASSIGNED SERIAL NUMBER 285

**TAX MAP**  
**CITY OF BEVERLY**  
 BURLINGTON COUNTY, NEW JERSEY  
 SCALE: 1" = 50' DATE: APRIL, 2009  
 PATRICK S. VITARELLI N.J.L.S. 27895  
 ENVIRONMENTAL RESOLUTIONS, INC.  
 525 FELLOWSHIP ROAD, SUITE 300, MT. LAUREL, NEW JERSEY