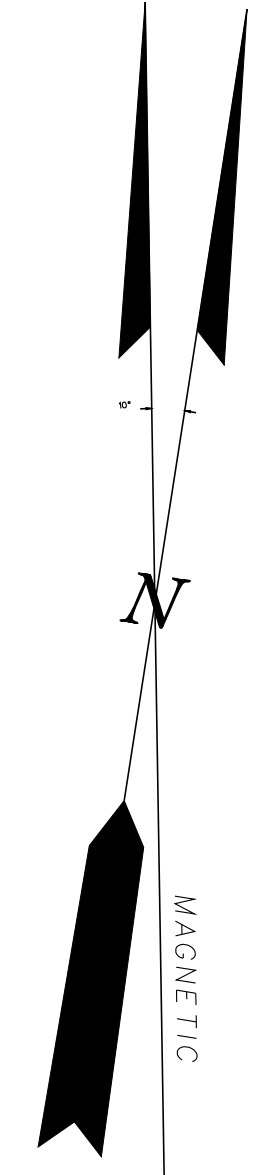
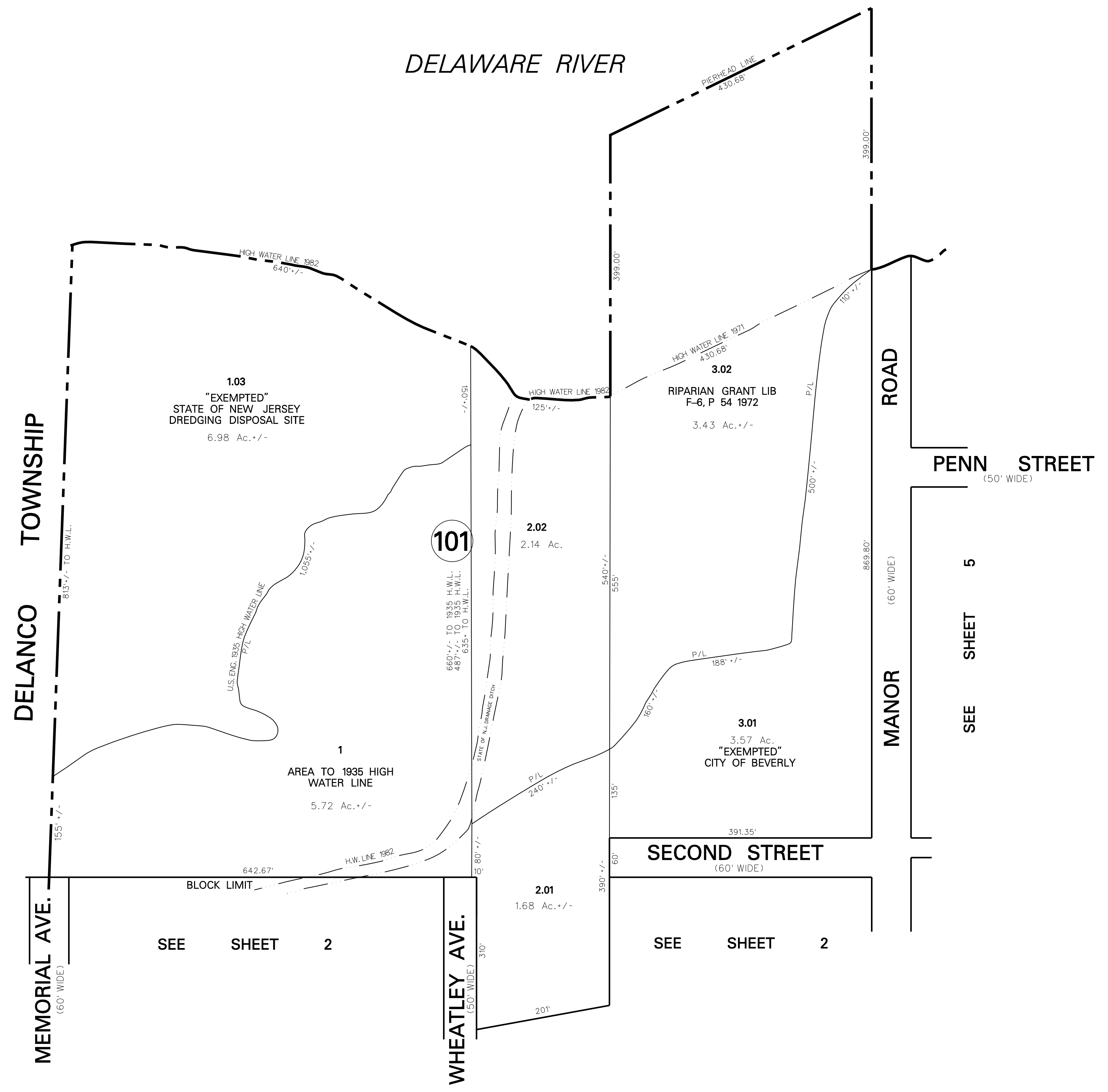
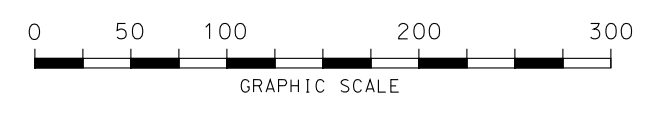


DATE	NAME OF P.L.S.	LICENSE #	OF P.L.S.
4/09/09	PATRICK S. VITARELLI	- N.J.P.L.S. #27895	
7/14/10	PATRICK S. VITARELLI	- N.J.P.L.S. #27895	
10/19/10	PATRICK S. VITARELLI	- N.J.P.L.S. #27895	



DIVISION OF TAXATION
 THIS SHEET WAS FORMALLY APPROVED ON AUG 17, 1980
 BY C.E. BARNES AND ASSIGNED SERIAL NUMBER 285

NOTES:
 1). ALL ACREAGE GIVEN ON THIS MAP DOES NOT INCLUDE ROAD AREAS.
 2). THIS SHEET IS A DIGITIZED COPY OF THE TAX MAP ORIGINALLY PREPARED BY M. PAUL AUSTIN AND AUGUST 1980 THE ORIGINAL APPROVED MAP IS ON FILE IN THE OFFICE OF THE TOWNSHIP ENGINEER.
 3). BLOCK AND LOT NUMBERS SHOWN HEREON APPLY TO THIS MAP ONLY, WHICH SUPERSEDES MAP DATED - APRIL 22, 1919



TAX MAP
CITY OF BEVERLY
 BURLINGTON COUNTY, NEW JERSEY
 SCALE: 1" = 100' DATE: APRIL, 2009
 PATRICK S. VITARELLI N.J.L.S. 27895
 ENVIRONMENTAL RESOLUTIONS, INC.
 525 FELLOWSHIP ROAD, SUITE 300, MT. LAUREL, NEW JERSEY