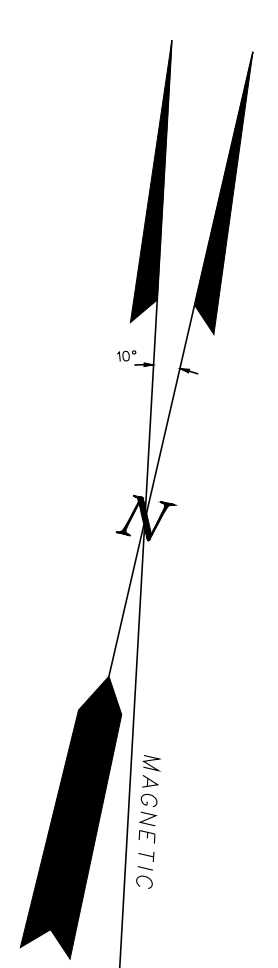
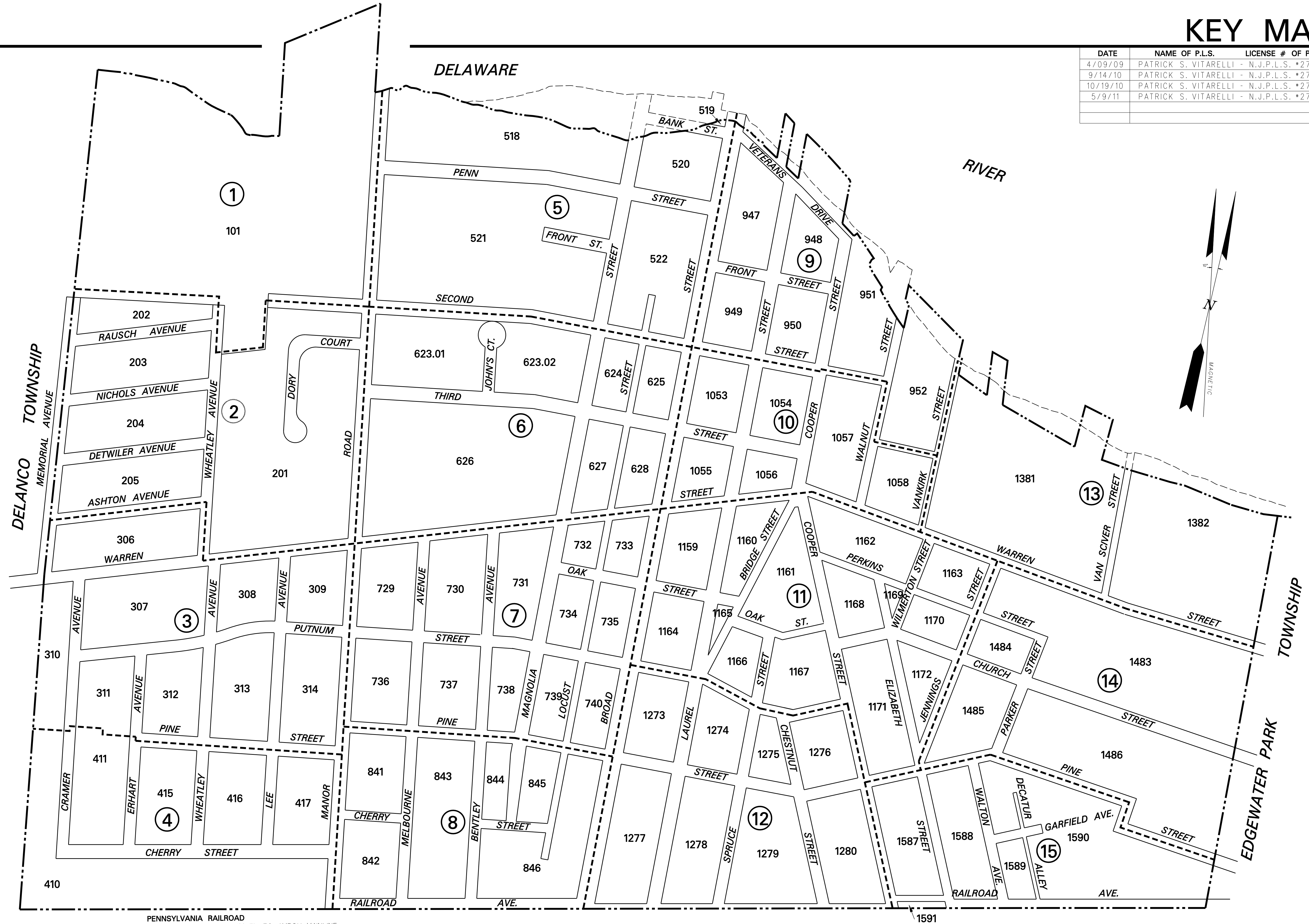


DATE	NAME OF P.L.S.	LICENSE #	OF P.L.S.
4/09/09	PATRICK S. VITARELLI	- N.J.P.L.S. #27895	
9/14/10	PATRICK S. VITARELLI	- N.J.P.L.S. #27895	
10/19/10	PATRICK S. VITARELLI	- N.J.P.L.S. #27895	
5/9/11	PATRICK S. VITARELLI	- N.J.P.L.S. #27895	

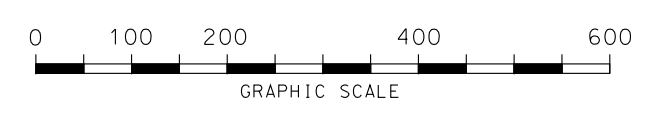
BLOCK RENUMBERING CHART	
FORMER BLOCK NUMBER	NEW BLOCK NUMBER
1	101/201
2	202
3	203
4	204
5	205
6	306
7	307
8	308
9	309
10	310/410
11	311/411
12	312
13	313
14	314
15	415
16	416
17	417
18	518
19	519
20	520
21	521
22	522
23.01	623.01
23.02	623.02
24	624
25	625
26	626
27	627
28	628
29	729
30	730
31	731
32	732
33	733
34	734
35	735
36	736
37	737
38	738
39	739
40	740
41	841
42	842
43	843
44	844
45	845
46	846
47	947
48	948
49	949
50	950
51	951
52	952
53	1053
54	1054
55	1055
56	1056
57	1057
58	1058
59	1059
60	1160
61	1161
62	1162
63	1163
64	1164
65	1165
66	1166
67	1167
68	1168
69	1169
70	1170
71	1171
72	1172
73	1273
74	1274
75	1275
76	1276
77	1277
78	1278
79	1279
80	1280
81	1381
82	1382
83	1483
84	1484
85	1485
86	1486
87	1587
88	1588
89	1589
90	1590
91	1591



NOTES:
 1) THE AREAS, BOUNDARIES AND DIMENSIONS, SHOWN ON THIS TAX MAP, ARE DERIVED FROM GROUND SURVEYS, AERIAL SURVEYS, AND RECORDED PLANS, MAPS, DEEDS, WILLS, AND ARE TO BE USED FOR ASSESSMENT PURPOSES ONLY.
 2) THIS SHEET IS A DIGITIZED COPY OF THE TAX MAP ORIGINALLY PREPARED BY M. PAUL AUSTIN AND AUGUST 1980 THE ORIGINAL APPROVED MAP IS ON FILE IN THE OFFICE OF THE TOWNSHIP ENGINEER.
 3) BLOCK AND LOT NUMBERS SHOWN HEREON APPLY TO THIS MAP ONLY, WHICH SUPERSEDES MAP DATED - APRIL 22, 1919

LEGEND

	MUNICIPAL LINE
	SHEET LIMIT LINES
	BLOCK LIMIT
	SHEET NUMBERS
	BLOCK NUMBERS



I HEREBY CERTIFY THAT THIS MAP AND ANY REQUIRED SURVEY HAS BEEN REVISED UNDER MY IMMEDIATE SUPERVISION, AND COMPLIES WITH THE LAWS OF THE STATE OF NEW JERSEY
 PATRICK S. VITARELLI N.J.L.S. 27895

DIVISION OF TAXATION
 THIS SHEET WAS FORMALLY APPROVED ON AUG 17, 1960
 BY C.E. BARNES AND ASSIGNED SERIAL NUMBER 285

TAX MAP
CITY OF BEVERLY
 BURLINGTON COUNTY, NEW JERSEY
 SCALE: 1" = 200' DATE: APRIL, 2009
 PATRICK S. VITARELLI N.J.L.S. 27895
 ENVIRONMENTAL RESOLUTIONS, INC.
 525 FELLOWSHIP ROAD, SUITE 300, MT. LAUREL, NEW JERSEY
 TO SHOW CONDITIONS AS OF : OCT. 2010